

TORONTO / ONTARIO **PAPE STATION**
TORONTO TRANSIT CORPORATION

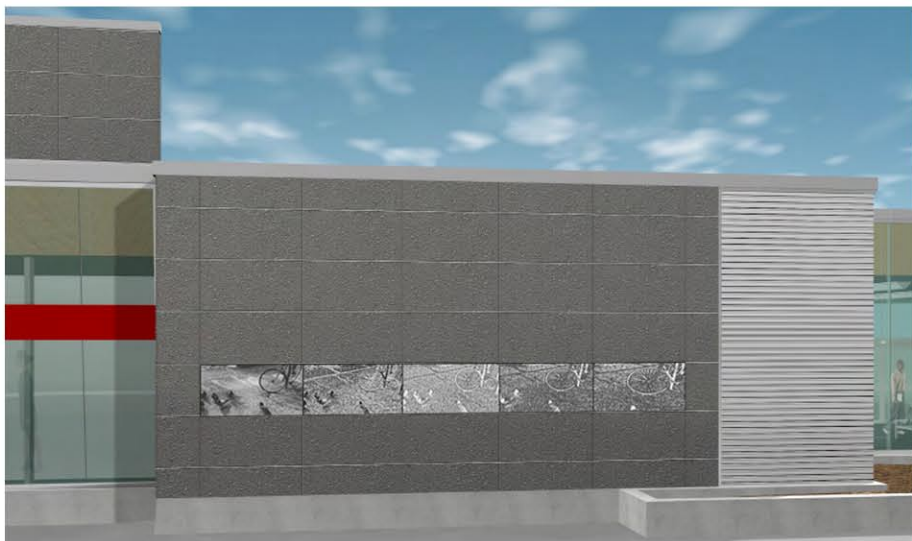
The Pape Station art component is derived from two key sources.

1. Interior architectural features of the Station
2. Urban features of the neighbourhood around the Station.

The art component is intended to create image variations that, through slices of time, act as reminders of past moments in the life and context of this public space and its environs.

Moving from representational images, through a series of variations, expresses a visual narrative that challenges and delights the eye and that metaphorically provides a journey of exploration for the viewer.

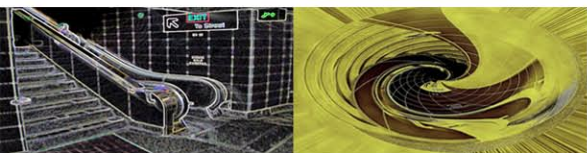
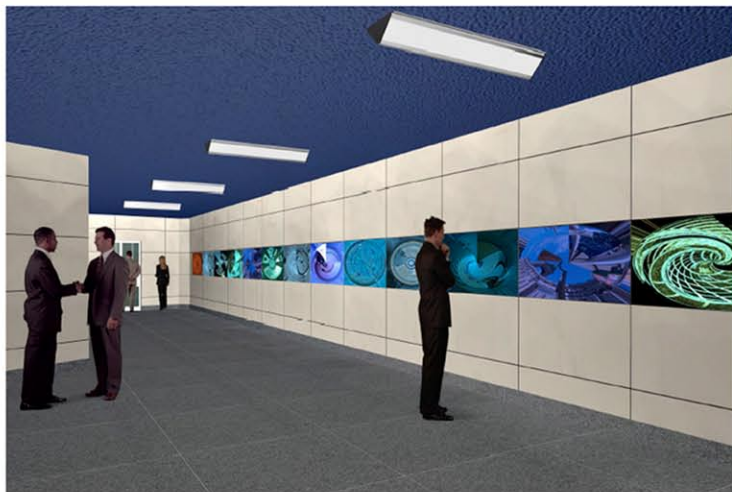
Pape Station
Etched granite frieze.



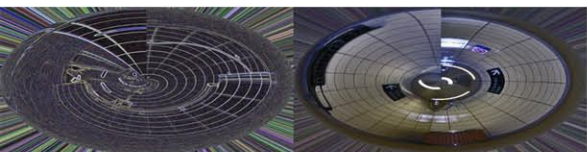
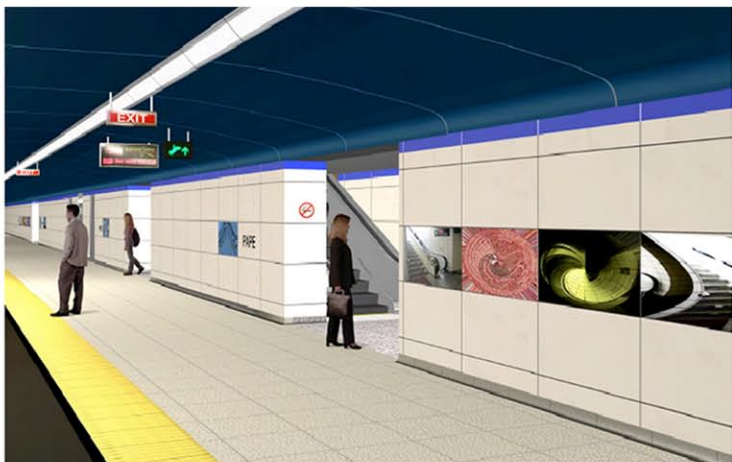
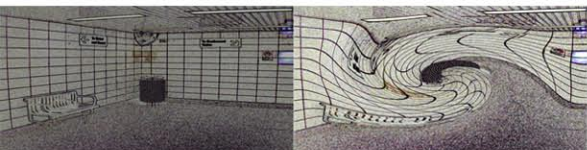
Pape Station
Escalator; etched glass.



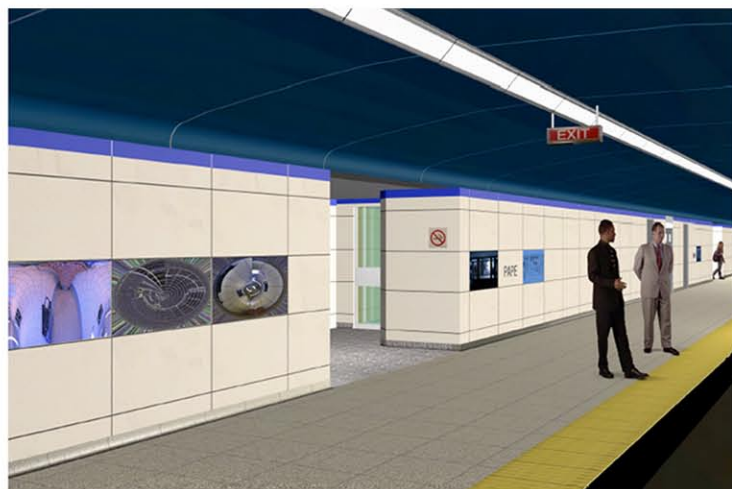
Pape Station concourse.
Digital glass-mirror works



Selected images: digital glass-mirror



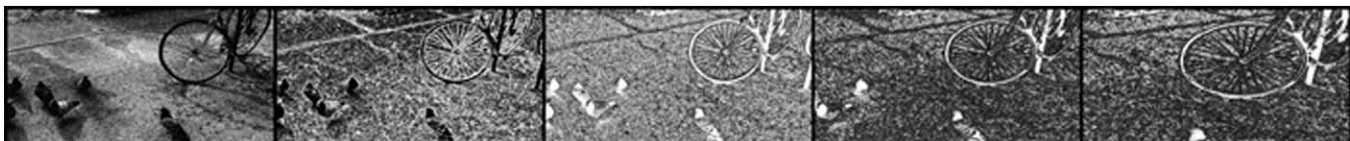
Pape Station platforms.
Digital-mirror works.



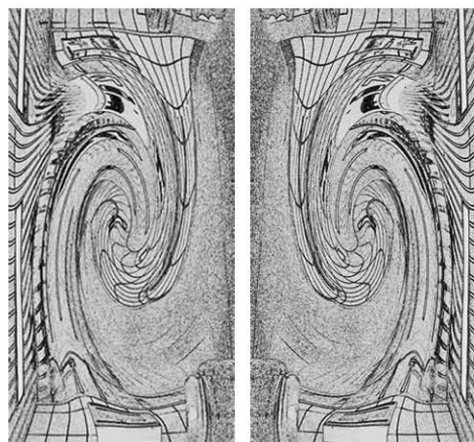
PAPE STATION

TORONTO TRANSIT CORPORATION

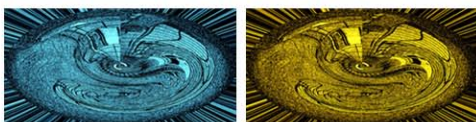
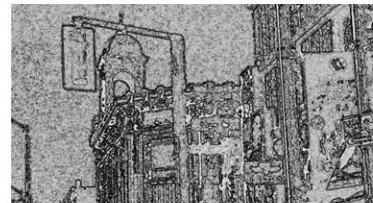
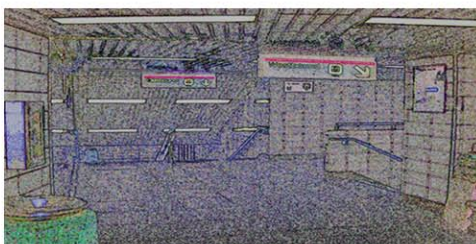
Pape Station, etched granite frieze, 2' x 20'.



Pape Station, glass/mirror, 2' x 4'.

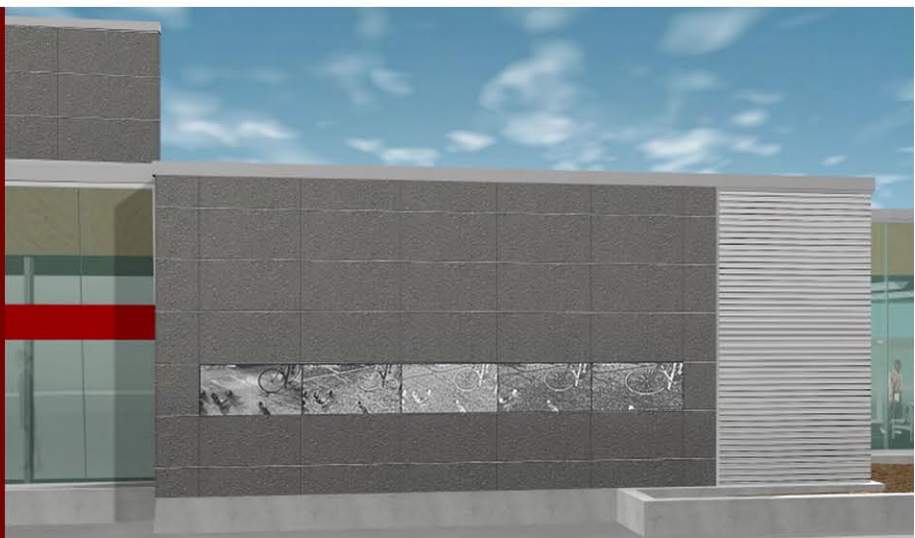


Pape Station, source and working images of concourse, elevator and exterior.



TORONTO / ONTARIO **PAPE STATION**
TORONTO TRANSIT CORPORATION

Pape Station
Etched granite frieze



Pape Station
Etched escalator glass



Pape Station Glass-mirror images [concourse and platforms]

